



YOUR
STORIES
OUR
HISTORY | KANSAS
HISTORICAL
SOCIETY

Information Packet
KANSAS ARCHEOLOGY TRAINING PROGRAM FIELD SCHOOL
Crawford State Park (14BO14 and 14BO361)
Bourbon and Crawford Counties, Kansas
June 7-16, 2024

Sponsors of the 2024 Kansas Archeology Training Program (KATP) field school are the Kansas Anthropological Association (KAA) (www.katp.org) and the Kansas Historical Society (KSHS) (<https://www.kshs.org/katp>).

COMPONENTS

This year's KATP field school consists of four primary components:

1. test excavations at two adjacent archeological sites
2. metal detector survey
3. formal class in historic preservation/historic architecture
4. the KAA certification program.

GOALS

1. To provide education in archeology through hands-on experience and formal classes on focused topics. Such intensive training allows quality scientific work to be accomplished at significant archeological sites.
2. To enable the investigation of sites for which there is no other research funding. KATP participants provide a skilled and highly motivated work force, allowing much needed research on sites that otherwise would be neglected.
3. To bring together individuals from Kansas and elsewhere who share a common interest in archeology. The camaraderie that comes from the renewal of old friendships, the forging of new ones, and the dedication to a common purpose makes the 10 days a very enjoyable and rewarding experience.

REQUIREMENTS

1. Participants must be at least 12 years of age. Those younger than 14 must always work with a parent or other sponsoring adult. Participants between 14 and 18 years of age must be accompanied on the project by a parent, guardian, or sponsor.
2. **Between March 15 and May 24, 2024**, participants must register online through the KSHS website at <https://kansashistoricalsociety.regfox.com/2024-katp-field-school>.



3. Participants are encouraged, but not required, to become members of the KAA and/or the KSHS. The online registration offers membership options. Whether they join the KAA and/or the KSHS or not, all participants are required to sign the Legal Release, Attendance Agreement, and **KAA Code of Ethics**.

4. A registration fee is required of all participants to help cover field school expenses. The registration fee for members of the KAA and the KSHS is \$35 for standard participants, \$25 for participants 65 and older, and \$15 for students currently enrolled at a middle school, high school, or college. If a participant is not a member of either the KAA or the KSHS, the fee is \$90. **Registration fees will be refunded only if a cancellation request is received by June 1.**

Participants are responsible for their own transportation to the project, lodging, and food. **No indoor camping options are provided this year.** Suggestions for places to stay are included in the Project Area Accommodations section of this document.

5. Participants must complete their schedules through the online registration. During the field school schedule changes should be made with Virginia Wulfkuhle at the Aggie's Dream headquarters or the records team in the field.

6. Before taking part in field school activities, all participants must check in at the **project headquarters: Aggie's Dream Storm Shelter/Community Center**, Crawford State Park, 1 Lake Rd, Farlington, KS 66734. The check-in table will be placed near the building entrance and **will be staffed only between 7:30 and 8:00 a.m. each day, so please arrive during that half-hour.**

7. The facility is located on Kansas Department of Wildlife and Parks property, and the associated **park entrance fees cannot be waived.** Day passes can be purchased in the Crawford State Park office for \$5.00, or an annual pass that allows entrance into all Kansas State Parks costs \$15.00. To check in, attend Orientation and Principles of Archeology classes, evening programs, and Project Summary at the Aggie's Dream headquarters, a park pass will be necessary. **No alcohol is allowed in Crawford State Park, even in vehicles.**

8. All participants must attend a one-time Orientation, detailing the goals of the program and archeological background of the site. Orientation is offered daily June 7–15 from 8:00 to 8:30 a.m. at the Aggies Dream headquarters. New KATP participants must take the Principles of Archeology course. This class follows Orientation each morning June 7–14 and will be held at Aggie's Dream headquarters. **First-time participants should expect their first morning to be Orientation and the Principles of Archeology class.** Members who have attended the Principles class at a previous KATP field school are not required to repeat it and may go directly to their scheduled activity after attending Orientation. There will be no Principles class on June 15 and 16, and therefore **no one new may start on the project on those final two days.**

9. The training program is a serious scientific effort; procedures and protocol must always be followed. **It is neither ethical nor permissible for participants to take artifacts from any of the sites that are investigated as part of the field school.** Also, participants are not allowed on the sites from 5:00 p.m. to 7:45 a.m. After field school is complete, participants are not allowed to return to the sites for any reason.

10. No smoking is allowed on the sites.

11. Participation in the program may be from a single day to the entire 10-day period. However, commitment to four hours at a time, beginning at either 8:00 a.m. or 1:00 p.m., is required.

12. If a participant must leave the project before their stated departure time, he or she should notify Virginia Wulfkuhle at the Aggie's Dream headquarters or the records team in the field about the change of plans. Otherwise, the staff worries about missing persons.

13. The KAA and the KSHS do not discriminate on the basis of disability in admission to, access to, or operation of their programs. **The KAA requests prior notification to accommodate individuals with disabilities or special needs.** To make special arrangements, contact Virginia Wulfkuhle (virginia.wulfkuhle@gmail.com) at least two weeks prior to the start of the field school.

STAFF

The principal investigator for the 2024 KATP field school will be Tod Bevitt of Buried Past Consulting, LLC.

Volunteer Staff

Virginia Wulfkuhle, KAA Editor, coordinating activities at Aggie's Dream headquarters

Dr. Tim Weston, KAA President, assisting with field investigations

Dr. Bob Hoard, assisting with field investigations

Deb Aaron, site supervisor at 14BO14

Angelo Ruiz, site supervisor at 14BO361

Several experienced KAA members will assist at the Aggie's Dream headquarters and perform photography and record-keeping tasks in the field.

KSHS Staff

Professional KSHS staff members assisting with the field school on a limited basis are as follows:

Dr. Nikki Klarmann, State Archeologist

Liam Bevitt, Research Analyst

FIELD INVESTIGATION

The field school will focus on two adjacent sites: a multi-component prehistoric site (14BO361) and an abandoned historic farmstead (14BO14). While physically separate from Crawford State Park, the property encompassing both sites is owned by the Kansas Department of Wildlife and Parks and managed by local park staff.

Judging from surface artifacts, 14BO361 appears to contain both Late Archaic and Early Ceramic components, as well as some historic material. It was recorded in 2014, based on artifacts collected by the then-landowner and donated to Crawford State Park. No investigations have been conducted since. The 2024 KATP field school is an opportunity to further document the site through test excavations, to understand its history, and to determine its eligibility for the National Register of Historic Places.

Site 14BO14 is located nearby. Most of the structures appear to have been constructed during the late nineteenth–early twentieth centuries. However, one of them, based upon construction details, might be considerably earlier, possibly from the Kansas Territorial period (1854-1860). Investigations at this site will focus on documentation of the potentially early structure, along with limited test excavations and metal detector survey in its vicinity. The research goals for this site are similar to those for 14BO361. Further documentation of the site (through architectural evaluation, test excavations, and metal detector survey) will allow a better understanding of its history and possibly nomination to the National Register of Historic Places in the future.

PREREQUISITES, SCHEDULES, and TRANSPORTATION

Signing the KAA Code of Ethics, payment of field school fees, and completion of Orientation and Principles of Archeology sessions are prerequisites for participation. Furthermore, participants are asked to commit at least a four-hour block of time to an activity.

During the day each participant is required to complete and submit certain written records, which become part of the permanent site file. All accumulated records and artifacts will be curated by the KSHS in Topeka for future research and museum use. Depending upon experience and previous training, individuals also may be involved in other activities, such as mapping, recording features, and making profile drawings.

Logistical details, including driving directions, will be announced at Orientation. Parking will be available at the sites, which are located about 7 miles from Crawford State Park on well-maintained gravel roads. Parking passes are **not** required here, and signs will direct participants where to park. **Volunteers and visitors are strongly encouraged to carpool whenever possible.**

RECOMMENDED EQUIPMENT

Each field worker should provide his/her own hand tools and basic recording supplies.

1. Head covering, sunscreen, and a water bottle. Large coolers of drinking water will be provided.
2. Boots or comfortable hiking shoes and wet weather footwear and a waterproof jacket or poncho.
3. A toolbox, backpack, or other carrying bag.
4. An 8.5 by 11-inch clipboard, pencil with good eraser, ballpoint pen, and permanent black ink felt-tip pen ("Sharpie"). Optional: a personal notebook for recording field school experiences.
5. Camera (optional). Participants are encouraged to keep a personal record of their time at the KATP field school.
6. Work gloves for screening and digging and knee pads (optional). There are several commercial types made for garden work.
7. A retractable tape measure, marked in centimeters, with a minimum length of 2 meters.
8. A small forged trowel, such as a 5-inch (no larger than 6-inch) pointing trowel with a triangular blade or a 2-inch-wide margin trowel with a rectangular blade. Avoid trowels with riveted or welded shanks. Marshalltown and Goldblatt are good brands. Please no garden trowels.

When purchased, trowels are dull. For cutting through Kansas soil, a well prepared and sharpened trowel is indispensable. It is each participant's responsibility to sharpen his/her trowel before arriving on site and to keep it sharp. Although files will be available, the excavator may wish to purchase a small-mill bastard file. When sharpening a trowel, wear protective eye cover.

Sharpening will take some time with a file, so the initial sharpening can be done on a bench grinder. Once the blade is established, occasional light sharpening will keep it sharp. A sharpened trowel should be treated with the same precaution as a knife. Visit the KAA website (katp.org) to watch an instructional video about proper sharpening.

9. Small tools, such as a 2-inch-wide paintbrush, a whiskbroom, and a bamboo pick, for working on delicate items and a line level about 3 inches long.

10. A scoop or dustpan.

Other equipment, such as shovels and screens, sacks, and vials, drinking water and cups, will be provided by the KSHS.

FIELD LABORATORY

There will be no field laboratory at the 2024 KATP field school. KSHS Lab Archeologist Chris Garst retires on April 1, 2024. Congratulations, Chris! Her successor will be settling into the position and may visit the KATP field school. The KSHS and the KAA plan to host a lab event for everyone later in the summer. At that time recovered artifacts will be processed, and participants will have a chance to meet the new KSHS lab archeologist.

FORMAL CLASS

One formal class will be offered this year. **There is no extra charge for the class.** It can fulfill KAA Certification Program requirements or simply be taken to learn more about the topic, but **certification credit cannot be awarded if any part of the class is missed.** The class is open to the general public, as well as to KATP participants. **Preregistration is required and separate from KATP registration.** **To enroll or obtain more information, contact Ron VanBuskirk at 785-272-8681, ext. 240 or kshs.shpo@ks.gov.**

Historic Architectural Evaluation and Survey

Dates/Times: June 10, 1:00 p.m.–5:00 p.m., and June 11, 8:00 a.m. to 5:00 p.m.

Locations: Aggie's Dream headquarters and 14BO14

Instructors: KSHS Historic Preservation Office Staff

Description: This class will combine lecture and hands-on experience to teach the basic procedures for recording and documenting historic architectural resources. Part of the class will focus on the potentially early structure at the historic farmstead. This can be counted as an elective class in several KAA certification categories.

CERTIFICATION PROGRAM

The KAA conducts a certification program for KAA members in the basic skills and techniques of Plains archeology. The training sessions take place primarily at KATP field schools and involve a combination of hands-on instruction, experience, and formal classes. The specific categories of instruction cover archeological site surveying, excavation procedures, laboratory techniques, and public education efforts. After fulfilling the requirements of a category, members will be certified as proficient in particular skills.

The one-time enrollment fee for the certification program, paid to the KAA, is \$10. Information will be available at field school check-in and an evening meeting, where KAA members may sign up for the program. Interested individuals may contact KAA Certification Chair Chris Garst at archaeolady@gmail.com.

Being enrolled in the certification program and completing specific categories does not certify a person as a professional archeologist or provide any credentials for conducting archeology. The program is for personal enrichment and learning. Professional archeologists are those who meet the Secretary of the Interior Standards (https://www.nps.gov/history/local-law/arch_stnds_9.htm).

KAA NAME BADGES

KAA members may order permanent name badges directly from KAA Treasurer Melonie Sullivan, 1720 Prestwick Circle, Lawrence, KS 66047; melonie@sunflower.com. The badge is red plastic with engraved white lettering and a pin back and costs \$10. Provide the information below **for each badge ordered**. Badges will be



available for pick up and payment at the check-in table at the Aggie's Dream headquarters. **Orders received after May 24, 2024, cannot be filled in time for the 2024 KATP field school.**

Name and residence (as you wish it to appear on badge):

First _____ Last _____

City: _____ State: _____

ACCOMPANYING PROGRAMS

Various informal educational presentations and social gatherings will take place during the KATP field school. Anticipated programs include expert talks and field trips to local historic sites. A calendar will be posted at www.katp.org and <https://kansashistoricalsociety.regfox.com/2024-katp-field-school> as soon as possible. Revised schedules with specific times and locations will be displayed in the check-in area at the Aggie's Dream headquarters and elsewhere during the field school. Evening programs are open to the public and residents of surrounding communities are encouraged to attend. Please invite local people to share the project results at the Project Summary and ice cream social at the Crawford State Park Beachfront Shelter on the evening of June 15.

No inclement weather programs will be offered by archeological staff. However, a list of area attractions has been compiled below.



SUGGESTIONS FOR RAINY DAYS

FORT SCOTT

Driving Tour of Historic Fort Scott

231 E Wall St, Fort Scott, KS 66071

(620) 223-3566

Stop by the Chamber of Commerce to pick up a map and brochure.

Fort Scott National Historic Site

1 Old Fort Blvd, Fort Scott, KS 66701

(620) 223-0310; www.nps.gov/fosc/index.htm

Visitors' Center and buildings open daily 8am to 5pm; free admission

At Fort Scott National Historic Site visitors can view an 1840s military fort and connect with the lives of the soldiers, laundresses, the sutler, surgeon, and others, who strove to create a semblance of home at a frontier military post. Visitors may walk the park grounds, walkways, and parking lot from ½ hour before sunrise until ½ hour after sunset, except during periods of snow, ice, or other inclement weather conditions that make the grounds unsafe.

Fort Scott National Cemetery

900 E National Ave, Fort Scott, KS 66701

(913) 212-4612; www.cem.va.gov/cems/nchp/ftscott.asp

Open daily dawn until dusk; office open Mon-Fri 7:30am-4pm; free admission

Fort Scott National Cemetery was created during the Civil War and has continued to include all military since then. It was the first of 14 cemeteries declared national cemeteries in 1861 by President Lincoln.

Gordon Parks Museum

Ellis Fine Arts Center, 2108 S Horton St, Fort Scott, KS 66701

(620) 223-2700

Open Mon-Fri 10am-3pm; free admission

The Museum honors the life and work of Gordon Parks, who established his reputation as a world-renowned photojournalist for *Life Magazine*, chronicling the Civil Rights movement for two decades. His work for *Vogue* magazine established him as a master of fashion photography. As a filmmaker, he was the first African-American to direct a major Hollywood production with the poignant memoir of his youth *The Learning Tree*, filmed on location in Fort Scott. He also broke new ground with a hip black hero on the silver screen named Shaft.

Fort Cinema

224 W 18th St, Fort Scott 66701

(620) 223-3366; www.fortcinema.com

Lowell Milken Center for Unsung Heroes (including Irena Sendler "Life in a Jar" exhibit)

2 and 4 S Main St, Corner of Wall & Main St, Fort Scott, KS 66701

(620) 223-9991; www.lowellmilkencenter.org

Open Mon-Fri 10am-5pm, Sat 10am-4pm; free admission

An Unsung Hero is an individual whose actions made a profound and positive impact on history but is largely unrecognized by contemporary generations. Informative exhibits feature unsung heroes and other award-winning history exhibits. Home of "Life in a Jar: The Story of Irena Sendler." Catholic social worker Irena Sendler risked her own life to rescue numerous Jewish children from the Warsaw Ghetto during the Nazi occupation of Poland in World War II.

Fort Scott Trolley Tours

Pick up and drop off is at the Fort Scott Chamber of Commerce, 231 E Wall St, Fort Scott, KS 66701

(620) 223-3566; <https://visitfortscott.com/event/trolley-tour-of-historic-fort-scott/2021-05-28/>

Tours depart on Fri 11am, 12pm, 1pm, 2pm; Sat 10am, 11am, 12pm, 1pm., 2pm; \$6 adults

Hop aboard Dolly the Trolley for a 50-minute narrated tour of Historic Fort Scott, established in 1842! See museums, mansions, churches, the fort, National Cemetery, and other historic sites.

Museum of Creativity

102 S National Ave, Fort Scott, KS 66701

(209) 204-9743; <https://fortscott.com/list/ql/arts-entertainment-recreation-3>

Open Fri 9am-10pm, Sat 10am-4pm; \$2.00/child, \$1/adult

This interactive museum/exploratorium has both fun exhibits and hands-on activities, complete with concessions and a gift shop. Throughout are train models, Lego exhibits, Barbie exhibits, and photo props. Kids' play area includes free arcade games, tires, climbing dome, play structures, Giant Jenga, and more! Walk through the ever-changing themed maze! Make your own crafts to take home.

GIRARD

Girard History Museum

300 S Summit St, Girard, KS 66743

(620) 238-1706; girardkshistory.net

Open Tues-Fri 9am-3pm, Sat 10am-2pm; free admission

The Girard History Museum features the history of Girard and the surrounding Crawford County. It is located in the former St. John's Episcopal Church built in 1888, which features a spectacular oak ceiling and beautiful late 19th-century stained glass windows. Exhibits include Girard's socialist history and the Emanuel Haldeman-Julius "Little Blue Books."

PITTSBURG

Crawford County Historical Museum

651 S Highway 69, Pittsburg, KS 66762

(620) 231-1440; www.crawfordcountymuseum.com

Open Wed-Fri 10am-4pm, Sat 10am-3pm; free admission

This is the largest museum in the area with thousands of pioneer, mining, and bootlegging artifacts. Explore the colorful history of Crawford County and its residents through the interesting exhibits. Indoor displays feature vintage clothing, photos, coal mining and farming artifacts, printing exhibits, and horse-drawn vehicles. Outdoor exhibits include a one-room school house, an authentic neighborhood grocery store, and coal mining steam shovel.

Holiday Lanes

2406 N Broadway St, Pittsburg, KS 66762

(620) 231-2222; www.holidaylanesbowling.com

Call for hours, pricing, and availability of lanes.

Veterans Memorial and Vietnam Memorial Wall

1909 S Rouse St, Pittsburg, KS 66762

620-235-4762; www.psuvetmemorial.org

Open daily dawn to dusk; free admission

The overall memorial includes an entry rampart featuring U.S., state, and university flags and the five seals of the uniformed military branches; two impressive entry portals; an arch just behind the reflecting pool with an eternal flame; and patriotic bronze sculptures. One of the most prominent features is the Vietnam Memorial Wall, a half-sized replica of the permanent memorial wall in Washington, D.C.

LINN COUNTY

Mine Creek Civil War Battlefield State Historic Site

20485 K-52, Pleasanton, KS

(913) 270-4217; https://www.kshs.org/mine_creek

Grounds open daily dawn to dusk; visitor center open Wed-Sat 10am-5pm

On October 25, 1864, on the banks of Mine Creek, two Union brigades of approximately 2,500 troops defeated approximately 7,000 Confederates from General Sterling Price's Army of Missouri. Federal Colonels Frederick W. Benteen and John H. Philips led the attack in one of the largest cavalry battles of the Civil War and a major battle fought in Kansas.

Marais de Cygnes Massacre State Historic Site

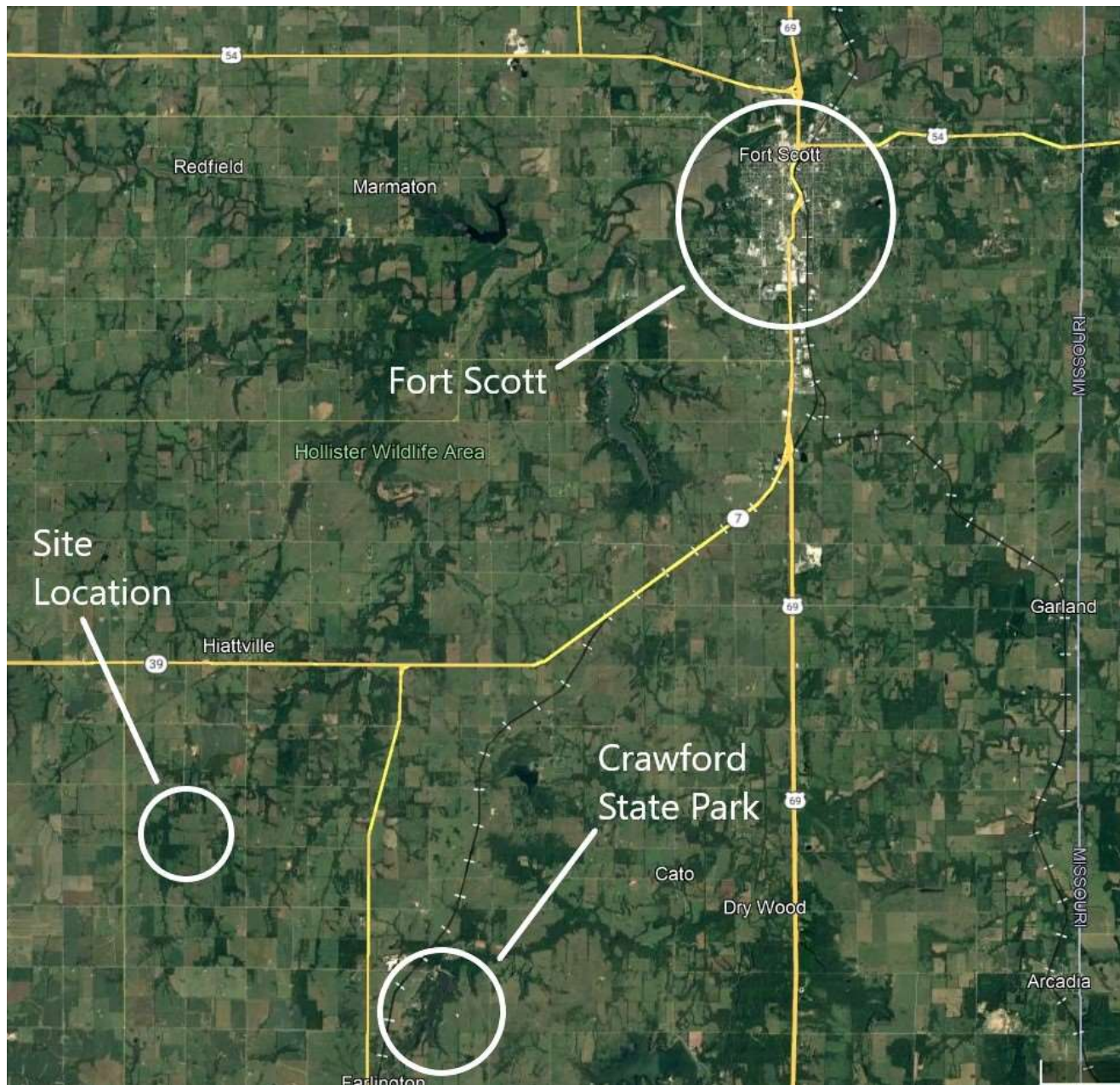
near Trading Post

(913)-270-4217; <https://www.kshs.org/p/marais-des-cyignes-massacre/19576>

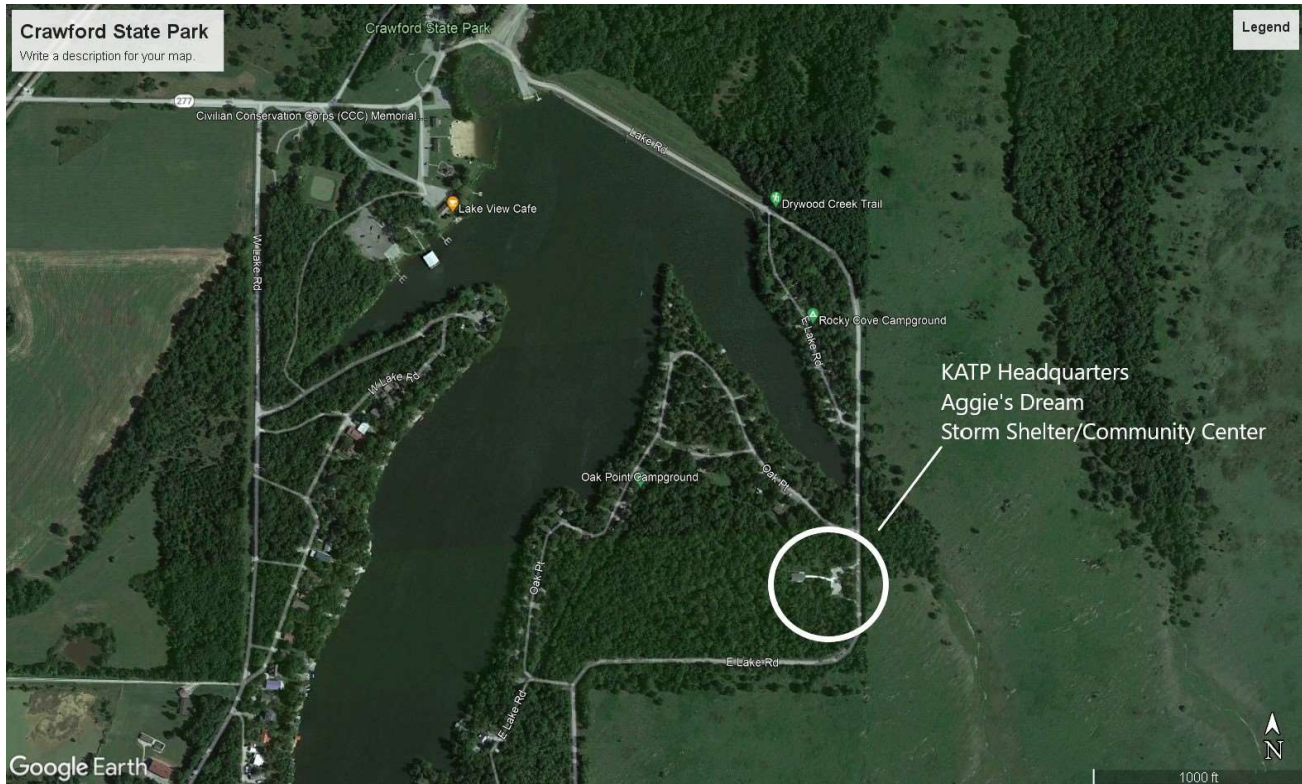
Open daily dawn to dusk; free admission

On May 19, 1858, proslavery men killed five free-state men and wounded five others in a ravine. Walk the grounds of this National Historic Landmark and learn more about the tensions during the era of territorial Kansas through exterior exhibits.

MAPS OF KEY LOCATIONS OVERVIEW



CRAWFORD STATE PARK & KATP HEADQUARTERS



PROJECT AREA ACCOMMODATIONS

The KAA and KSHS are not endorsing any business or omitting any business intentionally. Extensive accommodations and services are available in other nearby communities, including Pittsburg and Girard.

Food

Lake View Cafe, 1 W Lake Rd, Crawford State Park, Farlington 620-362-4131;

7 AM-8 PM Wednesday-Sunday

Arby's, 2101 S Main St, Fort Scott, 620-223-1660

Brick Street BBQ, 3 W Oak St, Fort Scott, 620-224-2425

Crooner's Lounge, 117 S Main St, Fort Scott, 620-224-9787

Dairy Queen, 2328 S Main St, Fort Scott, 620-224-2226

Domino's Pizza, 2 Jersey St, Fort Scott, 620-768-5533

El Charro, 2503 S Main St, Fort Scott, 620-223-9944

Holmtown Pub, 206 S National Ave, Fort Scott, 620-223-1477

Hot Wok Chinese Buffet, 1511 S National Ave, Ft Scott, 620-223-0588

La Hacienda, 24 N Main St, Fort Scott, 620-223-4400

Lotus Express, 209 State St, Fort Scott, 620-249-1239

Lucci's Cafe, 101 State St, Fort Scott, 620-644-3490

Marsha's Deli, 6 W 18th St, Fort Scott, 620-223-6432

McDonald's, 2224 S Main St, Fort Scott, 620-223-1322

Nu Grille, 24 N National Ave, Fort Scott, 620-223-9949

Opie's Pizza, 946 US 69, Fort Scott, 620-644-9867

Papa Don's Pizza, 101 N Main St, Ft Scott, 620-223-4171
 Scooter's Coffee, 1514 S National Ave, Fort Scott 620-223-5242
 Sharky's Pub, 16 N National Ave, Fort Scott, 620-223-4777
 Simple Simon's Pizza, 1920 S Main St, Ft Scott, 620-223-6954
 Sonic Drive-In, 1708 S National Ave, Ft Scott, 620-223-3630
 Subway, 1715 S National Ave, Fort Scott, 620-224-2420
 Taco Azul Food Truck, 750 S National Ave, Fort Scott
 Taco Bell, 2305 S Main St, Fort Scott, 620-223-6731
 Wendy's, 2000 S Main St, Fort Scott, 620-223-5396
 Chicken Annie's Original, 1143 E 600 Ave, Pittsburg, 620-231-9460
 Chicken Mary's, 1133 E 600 Ave, Pittsburg, 620-2231-9510
 Pichler's Chicken Annie's, 1271 S 220 St, Pittsburg, 620-232-9260

Grocery

G&W Foods, 911 E 6th St, Fort Scott, 620-223-3710
 Walmart Supercenter, 2500 S Main St, Fort Scott, 620-223-2867

Motels, Inns

Azure Sky Motel, 902 E Wall St, Fort Scott, 620-223-6410
 Budgetel Inn, 2222 S Main St, Fort Scott, 620-223-5330
 Courtland Hotel & Spa, 121 E 1st St, Fort Scott, 620-223-0098
 Fort Scott Inn, 101 State St, Fort Scott, 620-872-0100
 Sleep Inn & Suites, 302 E Wall St, Fort Scott, 620-223-2555
 Travelodge by Wyndham Fort Scott, 2505 US-69, Fort Scott, 620-955-4283

RV, Camping

Crawford State Park, 1 Lake Rd, Farlington, 620-362-3671
 Gunn Park, 1010 Park Ave, Fort Scott, 620-223-0550
 Rendezvous Campgrounds at Ft Scott Crossroads, 2152 Native Rd, Ft Scott, 620-509-0104

Laundry

Fort Scott Washateria, 501 S National Ave, Fort Scott, 620-644-9834

EMERGENCY SERVICES

In case of a health emergency at the archeological sites, first call the Crawford State Lake office, 620-362-3671

Ascension Via Christi Hospital, 1 Mt Carmel Way, Pittsburg, 620-231-6100
 Community Health Ctr of SE Kansas, 2322 S. Main St, Fort Scott, 620-223-8040
 Girard Medical Center, 302 N. Hospital Dr., Girard, 66743, 620-724-8291
 Bourbon Co EMS, 405 Woodland Hills Blvd, Fort Scott, 620-644-7951
 Fort Scott Fire Dept, 1604 S National Ave, Fort Scott, 620-223-2140
 Fort Scott Police Dept, 1604 S National Ave, Ft Scott, 620-223-1700
 Bourbon County Sheriff, 293 E 20th St, Fort Scott, 620-223-1440
 Crawford County Sheriff, 225 Enterprise Dr, Girard, 620-724-8274
 Kansas Highway Patrol, 301 W 14th St, Chanute, 620-431-2100

If you have an emergency, call 911.

Note: If there are questions or serious communications for the project's archeological staff **after June 1**, call the project cell phone at 785-580-7584 only during the hours of 8:00 a.m.-5:00 p.m. Be aware that **cell phone service in the area is limited**. Voice mail messages will be returned. **This is not an emergency number; participants are responsible for providing family and friends with contact information for themselves during the field school.**